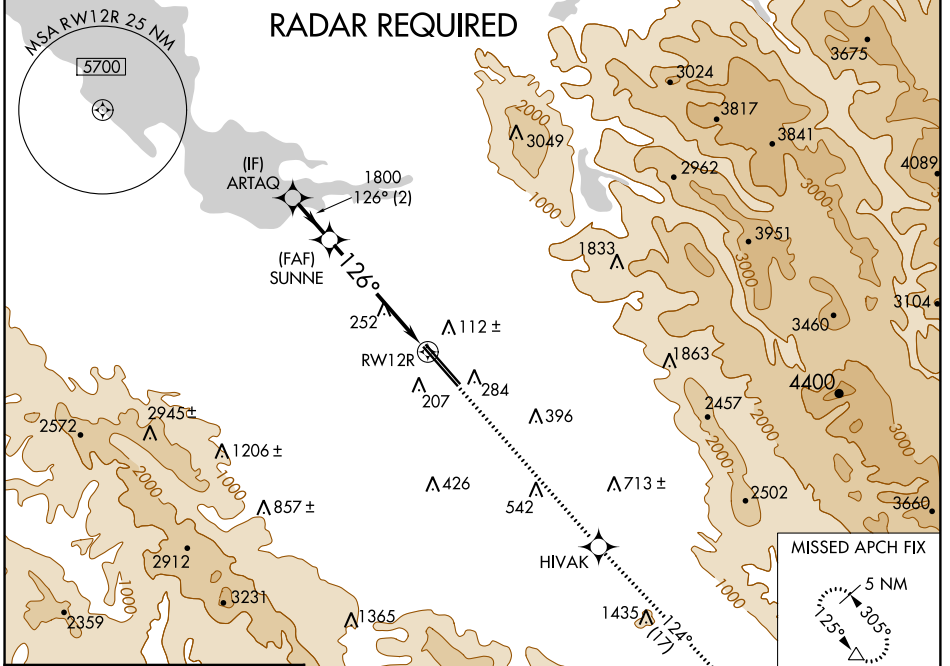


WAAS CH 90106 W12A	APP CRS 126°	Rwy Idg 8587	12R 8833
		TDZE 46	44
		Apt Elev 62	62

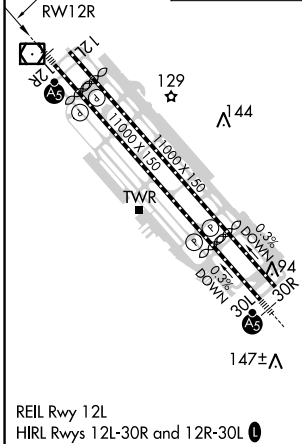
RNAV (GPS) Y RWY 12R

NORMAN Y MINETA SAN JOSE INTL (SJC)

<p>▽ For uncompensated Baro-VNAV systems, LNAV/VNAV NA below -1°C (31°F) or above 54°C (130°F). DME/DME RNP-0, 3 NA. For inoperative MALS, increase LNAV/VNAV all Cats visibility to 1 mile and LNAV Cats C/D visibility to 1½ mile.</p>		<p>MALS Rwy 12R</p>	<p>MISSED APPROACH: Climb to 4600 direct HIVAK and on track 124° to GILRO and hold.</p>			
D-ATIS 126.95	NORCAL APP CON 120.1 290.25	SAN JOSE TOWER ★ 124.0 (CTAF) 257.6	GND CON 121.7	CLNC DEL 118.0	CPDLC	UNICOM 122.95



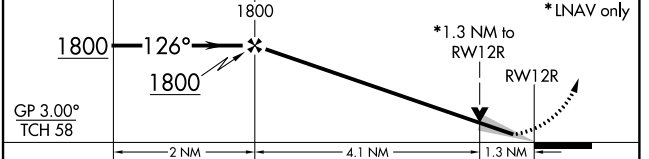
ELEV 62	TDZE 12R 46
	TDZE 12L 44



VGSI and RNAV glidepath not coincident (VGSI Angle 3.00/TCH 75).

4600 HIVAK tr 124° GILRO

*LNNAV only



GP 3.00° TCH 58				
CATEGORY	A	B	C	D
LPV DA	246-½		200 (200-½)	
LNAV/VNAV DA	371-5/8 325 (400-3/8)		371-1 325 (400-1)	
LNAV MDA	520-½ 474 (500-½)		520-1 474 (500-1)	
SIDESTEP 12L	520-1 476 (500-1)		520-1½ 476 (500-1½)	520-2 476 (500-2)

SW-2, 23 APR 2020 to 21 MAY 2020

SW-2, 23 APR 2020 to 21 MAY 2020